

RXT[®]-X[®] RS 325

The ultimate offshore performance watercraft.



- NEW Gulfstream Blue Premium
- Ice Metal / Manta Green

Rotax[®] 1630 ACE[™] - 325

ST3[™] Hull

Launch control

CAPACITY	
Rider capacity	3
Weight capacity	273 kg
Fuel capacity	70 L
Glove box	2.9 L
Front bin	96 L
Storage capacity - Total	98.9 L

DIMENSIONS	
Length (bumper to bumper)	345 cm
Width	125 cm
Height	115 cm

HULL	
Type	ST3 [™] Hull
Material	Fiberglass

OTHER FEATURES	
<ul style="list-style-type: none">Ergolock[™] two-piece racing seatSeat strapiBR[®] - Intelligent Brake & ReverseExtended VTS[™] (Variable Trim System)RF D.E.S.S.[™] keyDirect-access front storageWatertight phone compartmentLinQ[™] attachment systemBRP premium audio systemKnee padsWide-angle mirrors	<ul style="list-style-type: none">Round handle gripsFootwell carpetsLarge swim platformStainless Polished impellerUSB PortX-sponsonsFull-length angled wedgesHydraulic steering damperLow-rise racing handlebarsTilt steeringSki tow eye

ROTAX ENGINE	1630 ACE [™] - 325
Displacement	1,630 cc
Power (hp)	325 hp
Intake system	Supercharged with external intercooler
Cooling	325 hp
Reverse system	Closed-Loop Cooling System (CLCS)
Starter	Electronic iBR [®] *
Fuel type	Electric
Throttle system	98 octane
Exhaust System	iTC [™] (Intelligent Throttle Control)

GAUGE	
Type of gauge	10.25 in. touchscreen display with BRP Connect
Main functions	<ul style="list-style-type: none">BRP ConnectMusicNavigationBluetooth[†] connectivitySpeedometerRPMClock
	<ul style="list-style-type: none">Extended VTS[™]Fuel consumptionFuel autonomyTop speed and average speedVehicle hours
iTC System - mode	<ul style="list-style-type: none">Sport modeECO[®] modeSlow modeSpeed regulatorLaunch control

WEIGHT	
Dry weight (oil, coolant, no fuel)	382 kg
Power to weight ratio (HP / Kg)	0.85

WARRANTY
BRP limited warranty covers the watercraft for two years.

*Electronic brake, neutral and reverse.
†Bluetooth[†] is a registered trademark owned by Bluetooth[®] SIG, Inc. and any use of such trademarks by BRP is under license.

WHAT'S NEW

- 10.25 in. touchscreen display with BRP Connect

KEY FEATURES

- Rotax® 1630 ACE - 325
- ST3™ Hull
- Launch control
- Low-rise racing handlebar
- Ergolock™ two-piece racing seat
- Tilt steering
- Full-length angled wedges
- X-sponsons
- BRP premium audio system
- Hydraulic steering damper
- Stainless Polished Impeller



● NEW Gulfstream Blue Premium



● Ice Metal and Manta Green



ROTAX® 1630 ACE™ - 325 ENGINE

The Rotax® 1630 ACE™-325 is the industry's most powerful PWC engine from factory. With its 325hp, this engine delivers incredible acceleration and power thanks to innovative engineering for uncompromised offshore performance.



Hydraulic Steering Damper

3 steering positions to quickly control the stiffness. It adds riding precision by removing undesired input in rougher conditions. It provides a premium feeling and improved control to the rider.



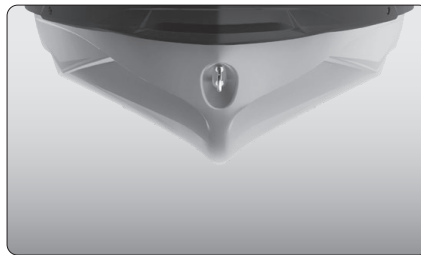
10.25 in Touchscreen Display with BRP Connect

Bring your on-water experience to another level with this premium and elegant touchscreen display developed specifically for Sea-Doo riders. Enjoy enhanced connectivity and intuitive features including ride statistics, a compass, media control, marine navigation with the BRP GO! app and much more.



Ergolock™ System

A narrow seat profile with deep knee pockets lets riders sit naturally and use the lower body to hold onto the machine for more control.



ST3™ Hull

An innovative hull that sets the benchmark for rough water handling, stability, and offshore performance.



Swim platform with Integrated LinQ™ System

Exclusive quick-attach system on the largest swim platform in the industry that allows for easy installation of accessories.