

FishPro™ Sport 170

Find yourself a new perspective on sportfishing with the stable, versatile vehicle that started it all.



White & Gulfstream Blue

Rotax® 1630 ACE™ - 170

ST3™ Hull

iDF - Intelligent Debris-Free Pump System

CAPACITY	
Rider capacity	3
Weight capacity	273 kg
Rear Platform Capacity (Swim & Rear Deck Extension Capacity (without passenger))	100 kg
Fuel capacity	70 L
Glove box	2.9 L
Front bin	96 L
LinQ™ fishing cooler	51 L
Storage capacity - Total	149.9 L*

DIMENSIONS	
Length (bumper to bumper)	373 cm
Width	126 cm
Height	115 cm

HULL	
Type	ST3™ Hull
Material	Fiberglass

OTHER FEATURES	
<ul style="list-style-type: none">Ergolock™ two-piece fishing seatSeat strapiBR® - Intelligent Brake & ReverseiDF - Intelligent Debris-Free Pump SystemVTS™ (Variable Trim System)Boarding ladderRF D.E.S.S.™ keyDirect-access front storageStorage bin organiserWatertight phone compartmentTwo sets of LinQ™ attachment pointsBRP Audio - premium system (optional)	<ul style="list-style-type: none">Wide-angle mirrorsHandle Grips with palm restFootwell carpetsLarge swim platform5 fishing rod holdersAngled gunwale footrestsRear Deck Extension2 LinQ™ front supportsCupholderUSB portTilt steeringSki tow eye

ROTAX ENGINE	1630 ACE™ - 170
Displacement	1,630 cc
Power (hp)	170 hp
Intake system	Naturally aspirated
Cooling	Closed-Loop Cooling System (CLCS)
Reverse system	Electronic iBR®**
Starter	Electric
Fuel type	95 octane
Throttle system	iTC™ (Intelligent Throttle Control)
Exhaust System	D-Sea-Bel™ system

GAUGE	
Type of gauge	7.6" wide digital display
Main functions	<ul style="list-style-type: none">SpeedometerRPMClockVTS™Fuel autonomyWater temperatureVehicle hours
iTC System - mode	<ul style="list-style-type: none">Sport modeECO® modeTrolling mode (slow mode)Speed regulatorAccessory Mode

WEIGHT	
Dry weight (oil, coolant, no fuel)	386 kg
Power to weight ratio (HP / Kg)	0.44

WARRANTY	
BRP limited warranty covers the watercraft for two years.	

*Total storage capacity includes LinQ fishing cooler
**Electronic brake, neutral and reverse.
†Garmin is a trademark of Garmin Ltd. or its subsidiaries.

KEY FEATURES

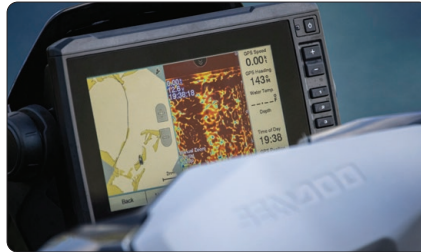
- Rotax® 1630 ACE™ - 170
- ST3™ Hull
- iDF - Intelligent Debris-Free Pump System
- GARMIN® 7" Keyed GPS & Fish Finder
- 5 fishing rod holders
- Rear Deck Extension with LinQ™
- LinQ™ fishing cooler 51 L
- Angled gunwale footrests
- Direct access front storage with bin organiser



 White and Gulfstream Blue

**iDF - Intelligent Debris Free system**

An innovative, industry-first system that allows you to free your pump of weeds and debris with intuitive handlebar-activated controls.

**GARMIN 7" GPS & Fish Finder**

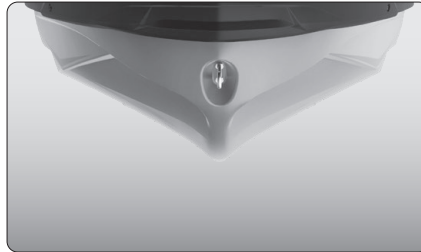
A top-of-the-line navigation, charting and fish-finding system using an in-hull transducer and mid-CHIRP sonar. Includes token for access to free upgraded regional maps.

**Angled Gunwale Footrests**

Ensures ergonomic and secure posture while fishing from a side position.

**ROTAX® 1630 ACE™ - 170 ENGINE**

The Rotax® 1630 ACE™ - 170 hp combines plenty of naturally aspirated power and economy, meaning the adventure can be exhilarating and prolonged.

**ST3™ Hull**

An innovative hull that sets the benchmark for rough water handling, stability, and offshore performance.

**Rear Deck Extension with LinQ attachment system**

Adds 29 cm to the back of the watercraft to increase stability, space, and storage capability.