



2024 SPORT FISHING

# FISHPRO™ TROPHY 170

The most advanced sport fishing personal watercraft on the water.

## KEY FEATURES

- Rotax® 1630 ACE™ – 170
- ST3 Hull™
- iDF – Intelligent Debris-Free Pump System
- Garmin® 7" touchscreen GPS & fish finder
- Advanced battery system
- Modular swivel seat
- Rear Deck Extension with LinQ
- Quick-connect livewell
- LinQ fishing cooler (51 L)
- Anchoring system
- Tech Package: BRP Audio – Premium System, full color 7.8" wide display and USB port

## CAPACITY

Rider Capacity	👤👤👤
Weight Capacity	272 kg
Rear Platform Capacity (without passenger)	100 kg
Fuel Capacity	70 L
Glove Box	2.9 L
Front Bin	96 L
LinQ Fishing Cooler	51 L
Storage Capacity – Total	149.9 L

## DIMENSIONS

Length (bumper to bumper)	373 cm
Width	125 cm
Height (pedestal seat uninstalled)	115 cm

## HULL

Type	ST3 Hull™
Material	Fiberglass

## OTHER FEATURES

- Ergolock two-piece Explorer Touring seat w/ modular swivel seat
- Seat strap
- iBR® – Intelligent Brake & Reverse
- VTST™ – Variable Trim System
- Boarding ladder
- RF D.E.S.S.™ key\*\*
- Direct-access front storage
- Storage bin organizer
- Watertight phone compartment
- Two sets of LinQ attachment points
- Wide-angle mirrors
- Handle grips with palm rest
- Footwell carpets
- Large swim platform
- 5 fishing rod holders
- Angled gunwale footrests
- 2 LinQ front supports
- Cup holder
- USB port
- Tilt steering
- Ski tow eye



Shark Grey and Orange Crush

## ROTAX® ENGINE

1630 ACE™ – 170

Intake System	Naturally aspirated
Displacement	1,630 cc
Cooling	Closed-Loop Cooling System (CLCS)
Reverse System	Electronic iBR®*
Fuel Type	95 octane
Throttle System	iTC™ (Intelligent Throttle Control)
Exhaust System	D-Sea-Bel™ system

## GAUGE

Type of Gauge	Large panoramic 7.8" wide LCD display	
Main Functions	<ul style="list-style-type: none"> <li>• BRP Connect</li> <li>• Music</li> <li>• Weather</li> <li>• Bluetooth® connectivity</li> <li>• Speedometer</li> <li>• RPM</li> </ul>	<ul style="list-style-type: none"> <li>• Clock</li> <li>• VTST™</li> <li>• Fuel consumption</li> <li>• Fuel autonomy</li> <li>• Water temperature</li> <li>• Speed statistics</li> <li>• Vehicle hours</li> </ul>
iTC System – Mode	<ul style="list-style-type: none"> <li>• Sport mode</li> <li>• ECO® mode</li> </ul>	<ul style="list-style-type: none"> <li>• Trolling mode (slow mode)</li> <li>• Speed regulator</li> </ul>

## WEIGHT

Dry Weight	416 kg
------------	--------

## WARRANTY

BRP limited warranty covers the watercraft for two years.

\*Electronic brake, neutral and reverse.



## FEATURE HIGHLIGHTS



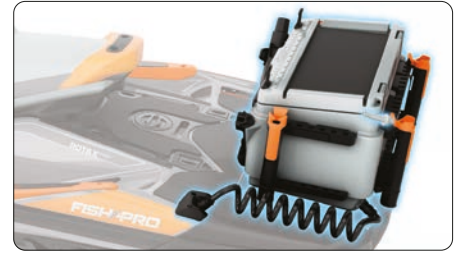
### Modular Swivel Seat

Installs in seconds for a game-changing experience. Both the pedestal and backrest stow cleverly away when not in use.



### Garmin® 7" GPS & Fish Finder

A top-of-the-line navigation, charting and fish-finding system using an in-hull transducer and mid-CHIRP sonar. Includes token for access to free upgraded regional maps.



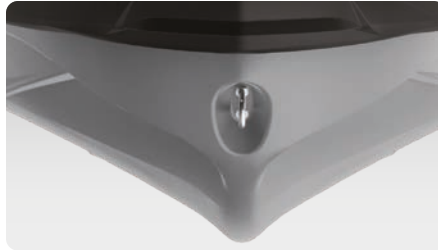
### Quick-Connect Livewell

Turn the LinQ Fishing Cooler into a livewell in seconds. An integrated pump constantly feeds fresh water into the reservoir keeping your catch or your bait alive all day.



### Rotax® 1630 ACE™ – 170 Engine

The Rotax® 1630 ACE™ – 170 combines plenty of naturally aspirated power and economy, meaning the adventure can be exhilarating and prolonged.



### ST3 Hull™

An innovative hull that sets the benchmark for rough water handling, stability, and offshore performance.



### Full-Color 7.8" Wide Display

Full-color display with incredible visibility and a new level of functionality. Bluetooth® and smartphone app integration provides music, weather, navigation and more.

©2023 Bombardier Recreational Products Inc., (BRP). All rights reserved. ®, TM and the BRP logo are trademarks of Bombardier Recreational Products Inc. or its affiliates. All product comparisons, industry and market claims refer to new sit-down PWC with 4-stroke engines. Watercraft performance may vary depending on, among other things, general conditions, ambient temperature, altitude, riding ability and rider/passenger weight. Testing of competitive models done under identical conditions. Because of our ongoing commitment to product quality and innovation, BRP reserves the right at any time to discontinue or change specifications, price, design, features, models, or equipment without incurring any obligation. †Garmin is a trademark of Garmin Ltd. or its subsidiaries.