



2023 PERFORMANCE

RXP[®]-X[®] 300

Race-ready performance watercraft, reimagined.

KEY FEATURES

- Rotax[®] 1630 ACE[™] – 300 engine
- T3-R[™] hull
- Launch control
- Ergolock[™] R racing seat
- Low-rise racing handlebar
- Double-angled footwell wedges
- X-sponsons
- Tech Package: BRP Audio – Premium System and full-color 7.8" wide display (optional)



- Premium Triple Black
- Millennium Yellow

CAPACITY

Rider Capacity	2
Weight Capacity	400 lb/182 kg
Fuel Capacity	18.5 US gal/70 L
Glove Box	2.56 US gal/9.7 L
Front Bin	37.78 US gal/143 L
Storage Capacity – Total	40.6 US gal/153.7 L

DIMENSIONS

Length (bumper to bumper)	130.6"/331.8 cm
Width	49.2"/125 cm
Height	44"/111 cm

HULL

Type	T3-R Hull [™]
Material	Fiberglass

OTHER FEATURES

- iBR – Intelligent Brake & Reverse
- Extended VTS[™] (Variable Trim System)
- RF D.E.S.S.[™] key
- Watertight phone compartment
- LinQ[®] attachment system
- Wide-angle mirrors
- Round handle grips
- Footwell carpets
- Large swim platform
- Ski tow eye

ROTAX[®] ENGINE

1630 ACE[™] – 300

Horsepower	300 hp
Intake System	Supercharged with external intercooler
Displacement	1,630 cc
Cooling	Closed-Loop Cooling System (CLCS)
Reverse System	Electronic iBR [®] *
Fuel Type	91 octane
Throttle System	iTC [™] (Intelligent Throttle Control)
Exhaust System	D-Sea-Bel [™] system

GAUGE

Type of Gauge	Large panoramic 7.8" wide LCD display (w/audio) 7.6" wide digital display (w/o audio)	
Main Functions	<ul style="list-style-type: none">• BRP Connect (opt.)• Music (opt.)• Weather (opt.)• Bluetooth connectivity (opt.)• Speedometer• RPM	<ul style="list-style-type: none">• Clock• VTS[™]• Fuel consumption (opt. w/ audio)• Fuel autonomy• Speed statistics• Vehicle hours
iTC System – Mode	<ul style="list-style-type: none">• Sport mode• ECO[®] mode• Slow mode	<ul style="list-style-type: none">• Speed regulator• Launch control

WEIGHT

Dry Weight	780 lb/354 kg
------------	---------------

WARRANTY

BRP limited warranty covers the watercraft for one year.

*Electronic brake, neutral and reverse.

SEA-DOO[®]





● Premium Triple Black



● Millennium Yellow

FEATURE HIGHLIGHTS



Ergolock™ R System

A narrow seat profile with deep knee pockets and a revolutionary adjustable saddle that allows riders to lock in to the machine like never before.



BRP Audio – Premium System (Optional)

The industry's first manufacturer-installed truly waterproof Bluetooth[†] audio system.



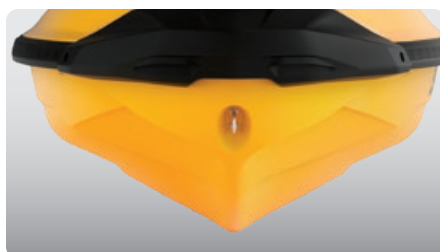
Full-Color 7.8" Wide Display (Optional)

Full-color display with incredible visibility and a new level of functionality. Bluetooth and smartphone app integration provides music, weather, navigation and more.



Rotax® 1630 ACE™ – 300 Engine

The Rotax 1630 ACE – 300 is the most powerful Rotax engine ever, delivering high efficiency and best-in-class acceleration.



T3-R Hull™

A deep-V design that offers unrivaled handling and acceleration and a new level of control at high speed.



Large Front Storage

An impressive 38 gallons of sealed storage space allows riders to safely stow belongings while riding.